

■ **Walt Disney's Comics and Stories – Vol. 4 No. 2**  
**(November 1943)**

**Front Cover — Observations (IMG\_1327)**

**Photo Condition & Quality**

Clear, high-resolution image with full cover visible, even lighting, and accurate color reproduction.



## Scene & Composition

- Donald Duck is seated in the foreground wearing a pumpkin-like costume and holding a baseball bat.
- Huey, Dewey, and Louie lean out of a window behind Donald, each reacting differently to the scene.
- The setting suggests a seasonal, Halloween-themed moment with bright orange and dark background elements.
- Masthead reads *Walt Disney's COMICS* with issue text **November 1943 – Vol. 4 No. 2 – 10¢** at the upper right.

## Physical Condition Findings

- Heavy creasing across the cover, including a pronounced vertical fold.
- Significant spine wear with splitting and paper loss near the staple area.
- Edge wear and small chips along the bottom margin.
- Corner rounding on all corners, lower-left most pronounced.
- Surface scuffing and dirt accumulation, especially in darker background areas.

## Color & Printing Quality

- Oranges, blues, and yellows remain strong though muted by age.
- Dark background areas show rub wear.
- Linework remains crisp and readable.

## Paper & Structural Notes

- Moderate oxidation visible along edges.
- Cover attached, but spine integrity is weakened.

## Overall Impression


A striking seasonal cover with heavy handling wear and notable spine deterioration.

---

# Back Cover — Observations (IMG\_1318)

## Photo Condition & Quality

Clear, evenly lit image with the full back cover visible.



*Discover*  
*New Reading*  
*Pleasure*

in a year's  
subscription  
(12 Big Issues)  
to

**WALT DISNEY'S**  
**COMICS AND STORIES** — only **\$1.00** per year  
POSTPAID

Thrilling, laugh-filled adventures every month with Mickey, Minnie, Donald, Goofy, and all the other Disney fun makers. **Subscribe now!**

---

**Mail to: K. K. PUBLICATIONS, Inc.**  
DEPT. 11 POUGHKEEPSIE, NEW YORK

Gentlemen:  
Enclosed find \$\_\_\_\_\_ for which please enter the following subscription to **Walt Disney's Comics and Stories** for \_\_\_\_\_ monthly issues beginning with \_\_\_\_\_ issue. (Please print)

Name \_\_\_\_\_  
Street and Number \_\_\_\_\_  
City or Town \_\_\_\_\_ Mailing Dist. No. \_\_\_\_\_ State \_\_\_\_\_  
Donor's Name \_\_\_\_\_  
Address \_\_\_\_\_

DONALD METZ  
W HAMBURG PA  
4 44 103177 AC

## Scene & Composition

- Subscription advertisement encouraging readers to subscribe to *Walt Disney's Comics and Stories*.
- Illustration of a uniformed character looking through binoculars while standing in a boat.
- Promotional text highlights twelve issues for one dollar per year.
- Subscription form occupies the lower half of the page.

## Physical Condition Findings

- Moderate to heavy surface soiling throughout.
- Creasing across the center and lower sections.
- Edge wear along right and bottom margins.
- Corner rounding with small areas of paper thinning.

## Color & Printing Quality

- Reds and blacks remain legible though dulled.
- Background paper heavily toned.

## Paper Condition

- Uniform tan oxidation.
- No moisture rippling observed.

## Overall Impression

Well-used back cover with significant aging but intact content.

---

## Interior Pages — Observations (IMG\_1329–IMG\_1332)

### Photo Condition & Quality

Interior images are clear and well lit, showing full panels, margins, and gutters.

### Page Color

tan to medium brown



## Interior Pages Findings

### Artwork & Story Content

- Mickey Mouse story titled **"Love Trouble"**, featuring domestic and romantic comedy sequences.
- Additional Mickey Mouse gag and dialogue-heavy pages.
- Donald Duck story involving neighborhood mishaps and slapstick situations.
- Panchito-themed adventure pages set in desert and village environments.

All pages appear complete with no missing panels or clipped material.

### Color & Printing Quality

- Primary colors remain visible but subdued by age.
- Pastel backgrounds show fading.
- Halftone patterns consistent with Dell printing of the period.
- Line art remains sharp.

### Paper Condition

- Moderate oxidation with darker edges.
- Margin foxing visible.
- Small corner creases and edge nicks.
- Slight natural waviness; no moisture damage.

### Structural Notes

- Pages firmly attached at the spine fold.
- No separation observed through the gutter.
- Paper remains flexible.

### Overall Impression

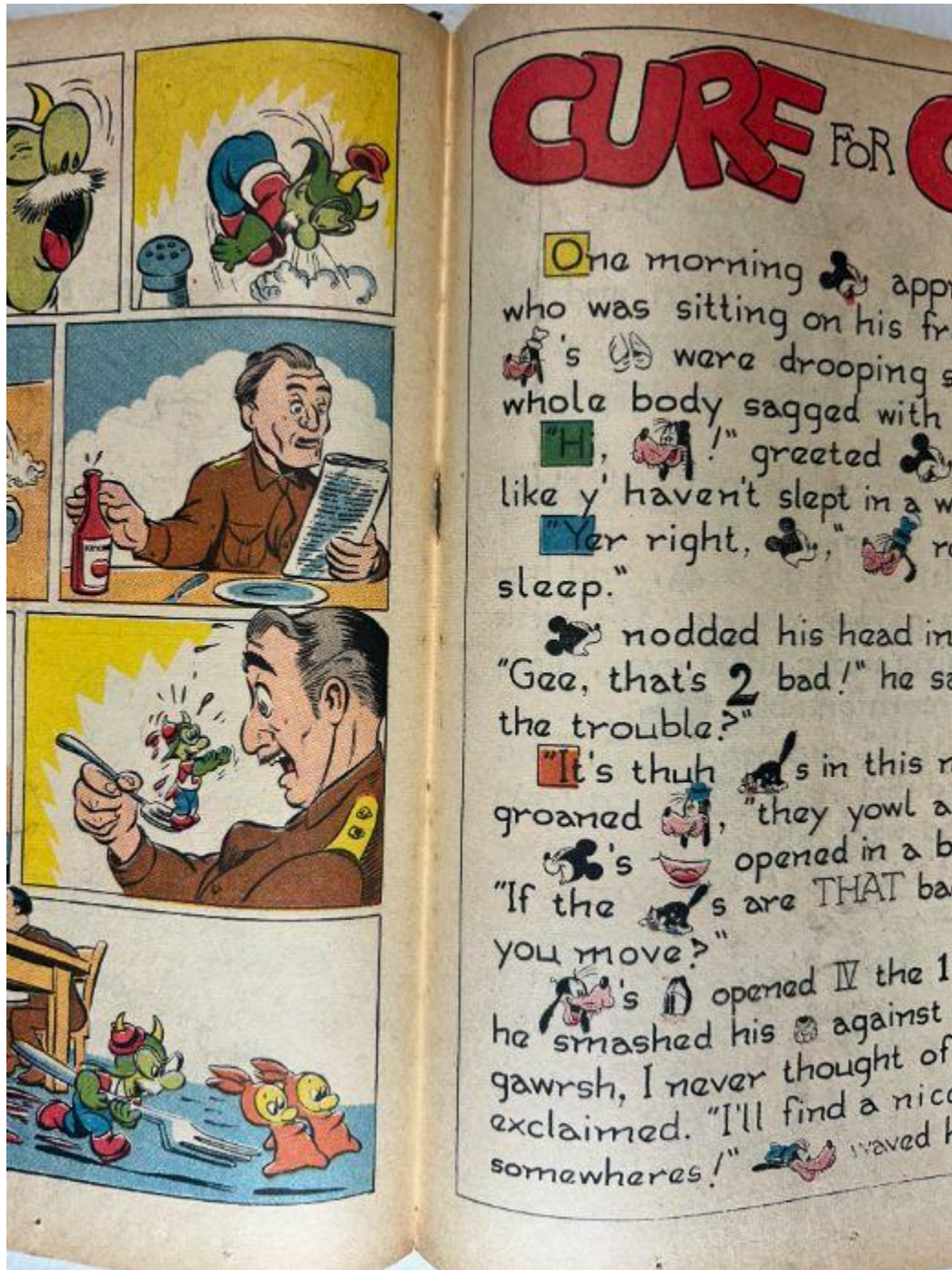
Complete and readable interior with typical Golden Age toning and light edge wear.

---

# Centerfold — Observations (IMG\_1333)

## Photo Condition & Quality

Clear two-page view with gutter alignment fully visible.



## Physical Findings

- Centerfold intact and firmly attached.
- No tearing or detachment observed.
- Even tan toning with slightly darker fold line.
- Minor surface wrinkles only.

## Overall Impression

Centerfold is intact and structurally sound.

## Spine — Observations (IMG\_1334)

### Photo Condition & Quality

Clear side-profile image showing the full spine edge and fold.



## Structural Findings

- Moderate paper loss along the spine.
- Visible splits and wear near the staple location.
- Forward spine roll present.
- Cover stock fraying at fold.

## Surface Condition

- Abrasion along the entire spine length.
- Gloss largely worn away.

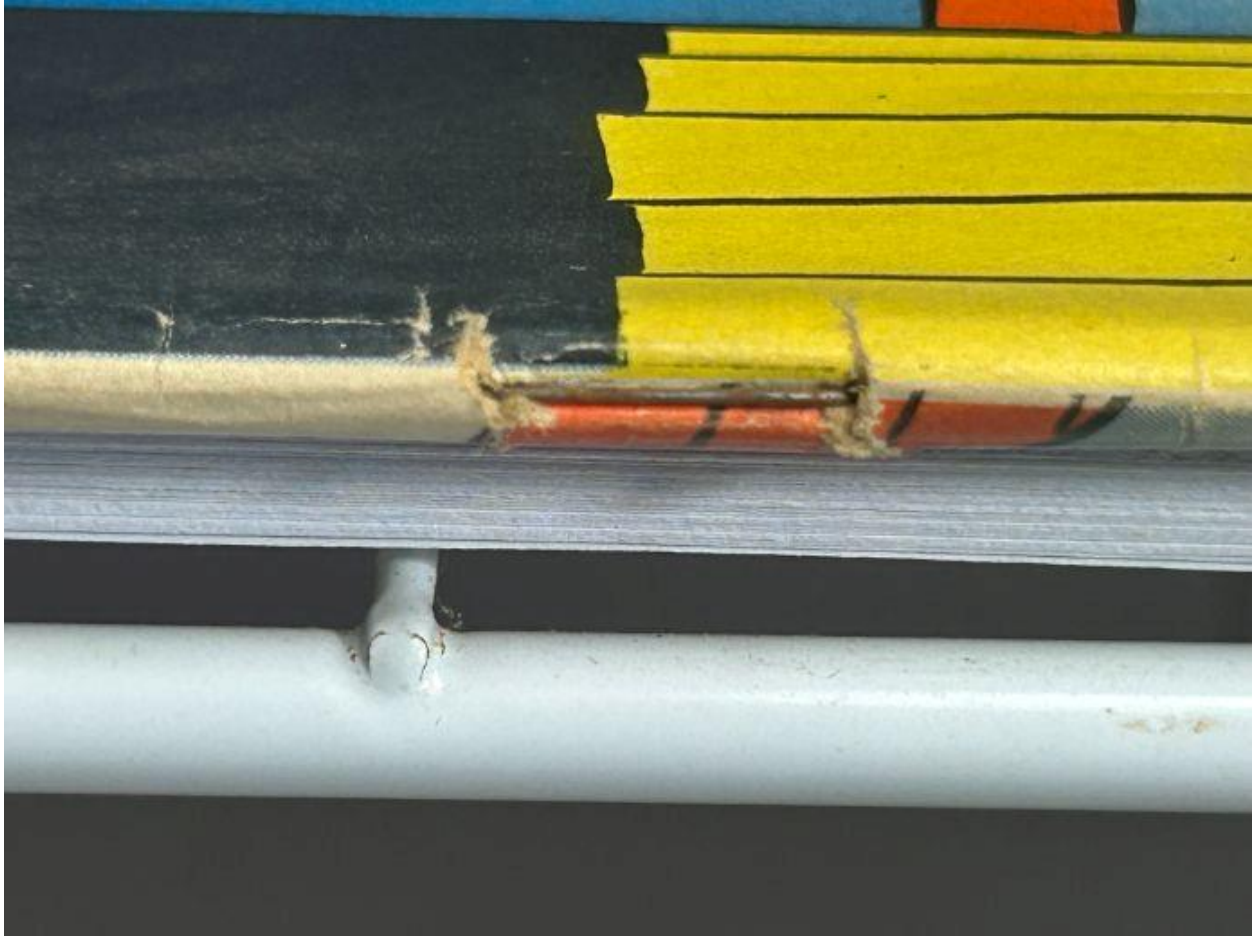
## Overall Impression

Spine shows moderate structural wear but remains intact.

# Upper Staple — Observations (IMG\_1335)

## Photo Condition & Quality

Clear macro image showing staple metal and surrounding paper fibers.



## Staple Findings

- Tearing around staple entry point.
- Moderate oxidation on the metal.
- Paper fibers frayed and slightly delaminated.
- Color loss immediately adjacent to staple.

## Overall Impression

Upper staple remains attached with localized paper damage.

---

# Lower Staple — Observations (IMG\_1336)

## Photo Condition & Quality

Clear view of the lower spine area.



## Staple Findings

- No lower staple present for this issue.
- Spine fold and centerfold remain intact in this area.
- No tearing or separation observed at the lower fold.

## Overall Impression

Lower spine area is intact; this issue appears to have been manufactured with a single staple.

---

# Brittleness Test — Observations (IMG\_1337)

## Photo Condition & Quality

Clear macro image showing page corner flex.



## Findings

- Page bends smoothly without cracking.
- No chipping or flaking observed.
- Paper dry but remains flexible.

## Overall Impression

Paper is aged but not brittle.